



# Smithy Park

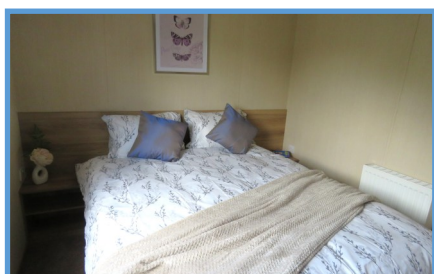
- Country Holiday Park -

## Pre Owned Abi Trieste



### Features

- 36 ft x 12 ft
- Central heating
- Winter insulated
- Double glazed
- 2 bedroom
- Enviro green
- Sited to pitch



2016 Model

Smithy Park, Abermule, Montgomery, Powys, SY15 6ND  
01686 630 657 or [info@smithypark.co.uk](mailto:info@smithypark.co.uk)  
[www.smithypark.co.uk](http://www.smithypark.co.uk)